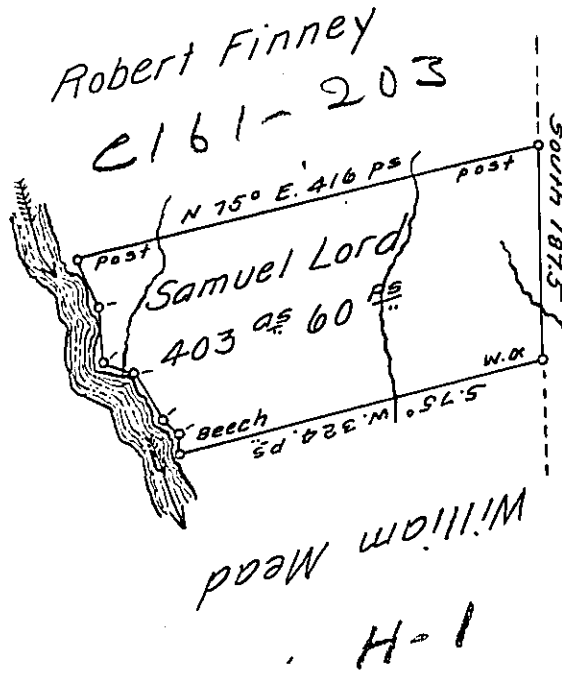


Courses and distances up French Creek beg. 9 at a Beech

- N. 16° W 16.8
- N. 56½° W 16.4
- N. 30½° W 36.0
- N. 20° W 14.4
- N. 67½° W 28.4
- N. 12° W 38.0
- N. 16° W. 48.4 to a post
- 198.4



In pursuance of a Warrant for 396 Acres — perches dated the 4th day of May 1801. was surveyed the 9th day of November 1801. for Samuel Lord the above described Tract of land containing 403 Acres 60 perches and allowance of Six per Cent. for Roads &c. Situate on the East side and adjoining French Creek in Mead Township Crawford County.

To Samuel Cochran Esquire }
 Surveyor General. }

William McArthur D.S.

IN TESTIMONY that the above is a copy of the original remaining on file in the Department of Internal Affairs of Pennsylvania, made conformably to an Act of Assembly approved the 16th day of February, 1833, I have hereunto set my Hand and caused the Seal of said Department to be affixed at Harrisburg, this twenty fifth day of April 1912.

Henry Horch
 Secretary of Internal Affairs.